



AMOLUXE

LED
Product
Catalog

15

EUROPE



INSPIRED BY NATURE

INFINITE POSSIBILITIES

IMPROVING THE WORLD

...ONE PROJECT AT A TIME



ABOUT

Amoluxe is a leading manufacturer of LED substrate, package, module, and high - performance outdoor and indoor architectural lighting products that serve the utility, industrial, commercial, OEM, and retail markets.

The company's goal is to establish and maintain long-term relationships with our clients and provide a quality solution with superior customer service. Since its inception, our research engineers have followed a work philosophy to innovate, educate, and focus on quality.

Amoluxe offers a versatile new line of LED based products that provide cost effective lighting solutions for an extensive range of roadway conditions as well as architectural indoor and outdoor environments. Our products provide an energy saving option that enhances and accentuates architectural environments with sophisticated design, exceptional performance and uncompromising quality.

Amoluxe, based in Seoul, Korea, is an affiliate of Amotech co., ltd.

architectural luminaires



Maalstrom 5-7



Tekka 8-9



Dansk 10



Nuage 11



Kaanta 12-13



Kaato 14-15



Vassa 16

exterior luminaires



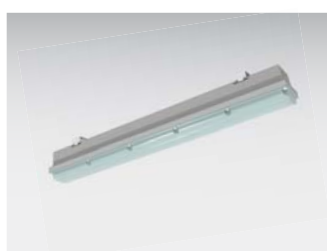
FX 06 17



FX 07 18



PX 10 19



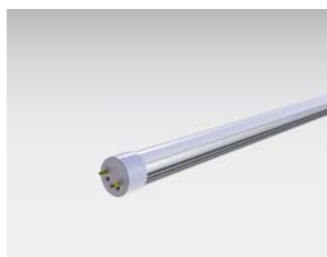
PX 30 20-21

architectural luminaires



TX 03 / 05 22

retrofit lamps



Bellux 23



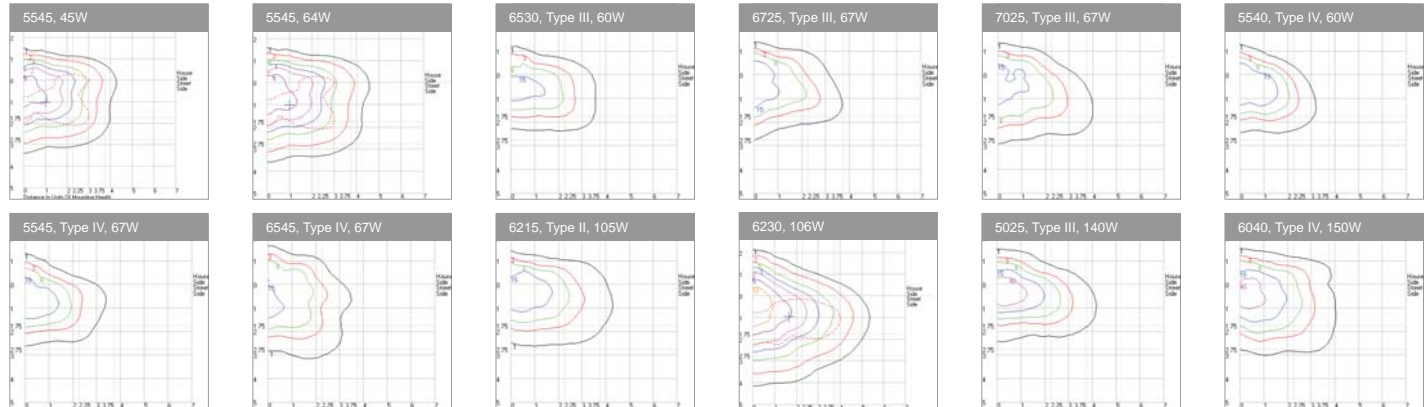
Features

- One piece die-cast aluminum housing with integral cooling ribs.
- Separate optical and electrical compartments.
- One-piece extruded silicone gasket for IP67.
- Concave glass or PMMA lens for maximum light output.
- Unique methodology and concept allowing superb uniformity.
- Wide range of standard and custom photometric distribution patterns available through its patented flexible optical system.
- Precise distribution of light with no unwanted light behind the pole or above horizon, making an effective contribution for reduction of light pollution and trespass.
- Significantly reduced glare in high angles for visual comfort.
- Suitable for operation in -45°C to 60°C ambient environments.
- Five-year limited warranty. Terms and conditions apply.
- Weight 9.5kg
- Power factor > 0.9

Applications

Public roadways, city streets, residential streets, parks, walkways and car parks.

Light distribution Partial list of photometry. Consult factory for infiite number of possibilities.



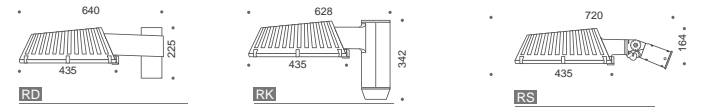
Ordering information

	Consumed Wattage	Number of LEDs	Drive Current	Luminous Flux	CCT*
MS20	15W	12	350mA	1400 lm	5500K
	22W	12	500mA	1900 lm	
	22W	18	350mA	2100 lm	
MS30	30W	12	700mA	2400 lm	5500K
	30W	24	350mA	2800 lm	
	32W	18	500mA	2900 lm	
MS40	45W	36	350mA	4200 lm	5500K
	45W	18	700mA	3600 lm	
MS50	52W	42	350mA	4900 lm	5500K
	53W	30	500mA	4700 lm	
MS60	60W	48	350mA	5600 lm	5500K
	64W	36	500mA	5700 lm	
	67W	54	350mA	6300 lm	
MS70	74W	42	500mA	6600 lm	5500K
	74W	60	350mA	7000 lm	
MS80	85W	48	500mA	7500 lm	5500K
	89W	36	700mA	7300 lm	
MS90	96W	54	500mA	8500 lm	5500K
	96W	78	350mA	9100 lm	
MS100	105W	84	350mA	9800 lm	5500K
	106W	60	500mA	9400 lm	
MS140	140W	78	500mA	12200 lm	5500K
	140W	114	350mA	13300 lm	
MS150	150W	84	500mA	13200 lm	5500K
	150W	126	350mA	14700 lm	
	150W	60	700mA	12100 lm	

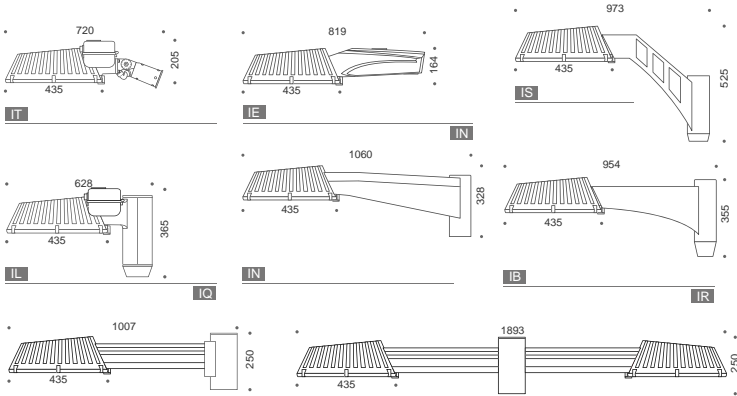
*Multiplier factor for neutral white: 0.94
for warm white: 0.82

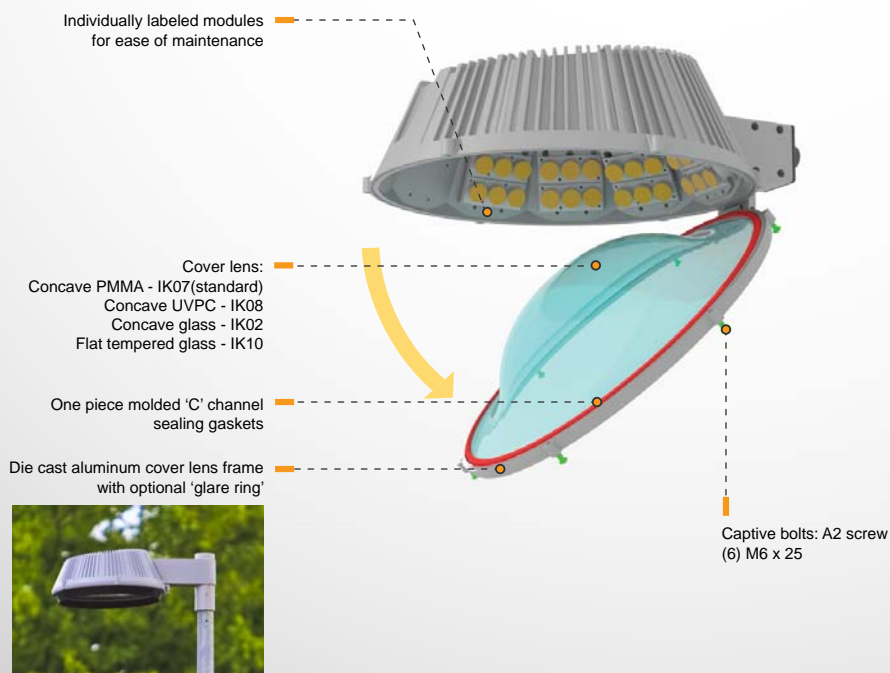
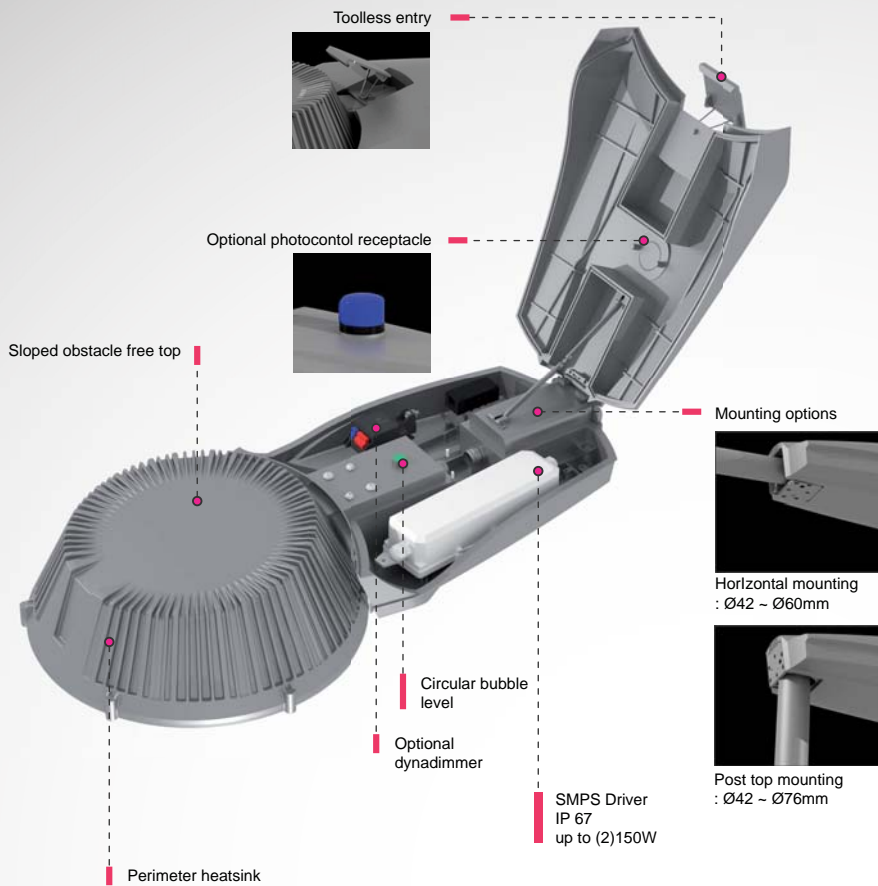
Mounting Options

Remote Driver



Integral Driver

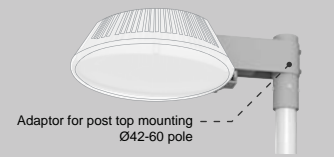




Mounting Options

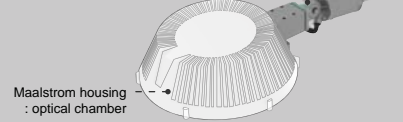
Remote Driver

RD



RS

Tilt arm for Post top & horizontal mounting



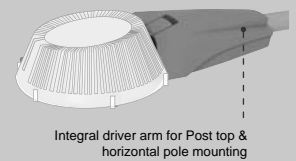
Integral Driver

IT

Power box stacked above the housing

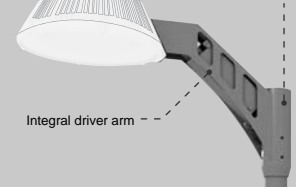


IE



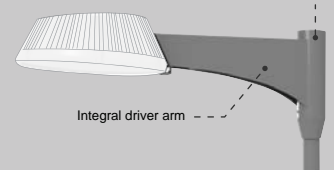
IS

Post top mounting for Ø60 pole



IB

Post top mounting



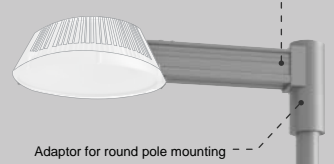
IQ

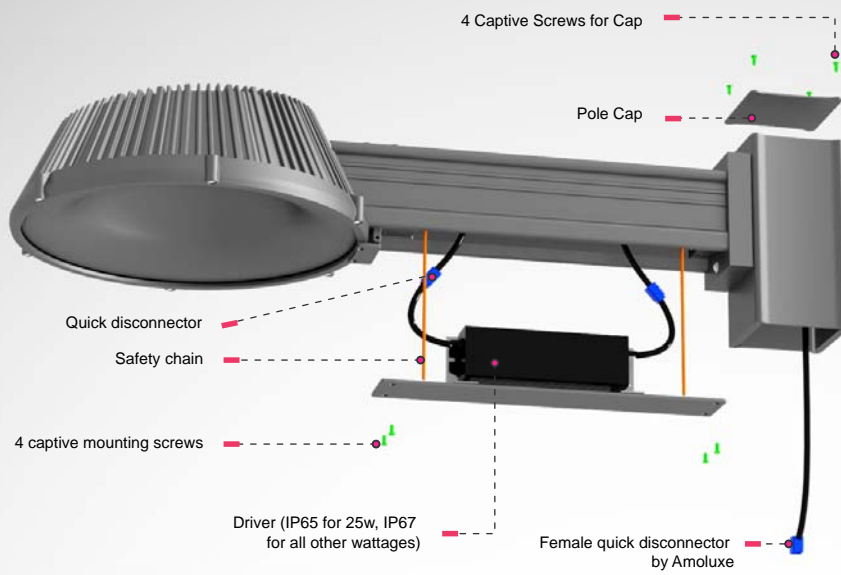
Extruded integral driver arm



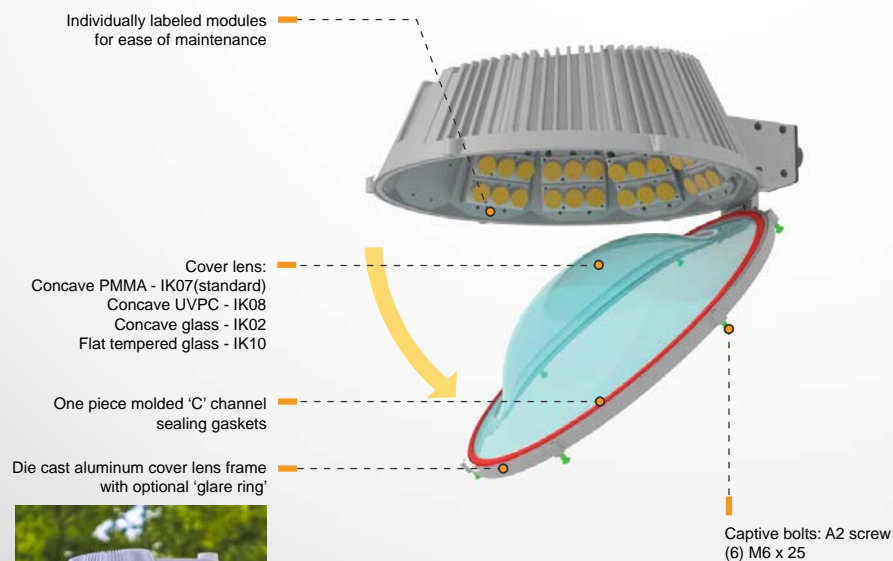
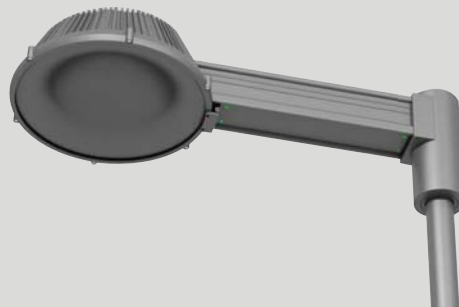
IR

Extruded integral driver arm





For Round pole



Mounting Options

Remote Driver

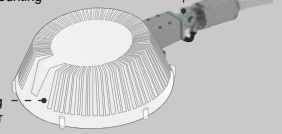
RD



RS

Tilt arm for Post top & horizontal mounting

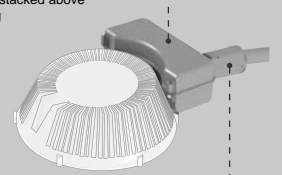
Maalstrom housing : optical chamber



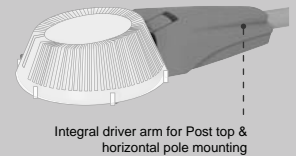
Integral Driver

IT

Power box stacked above the housing

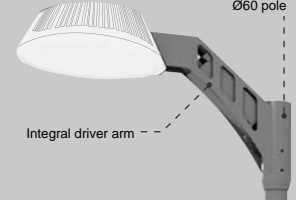


IE



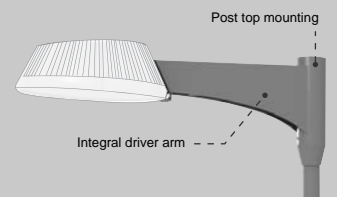
IS

Post top mounting for Ø60 pole



IB

Post top mounting



IQ

Extruded integral driver arm



IR

Extruded integral driver arm





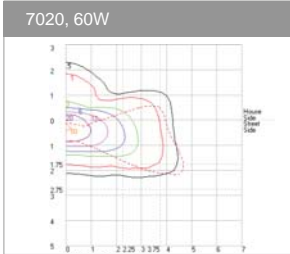
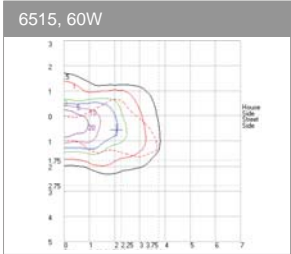
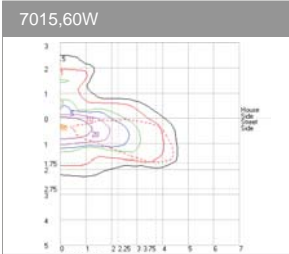
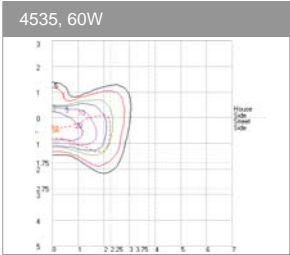
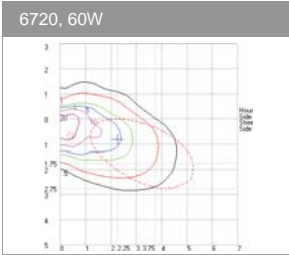
Features

- One piece die-cast aluminum housing with internal cooling ribs.
- Simple, modern and aesthetic look that is similar to a typical roadway luminaire with a lower windage value.
- Modular system design allowing various wattages and operating driving currents.
- High-efficiency, integral driver in a separate compartment for improved thermal management.
- Upgradable/Future proof on site replacement optical module.
- Multiple photometric distribution options.
- Optional circuit protection module withstands 10kV of transient line surge.
- Dimming available.
- Five-year warranty available. Extended warranty available. Terms and conditions apply.

Mounting options



Light distribution



Ordering information

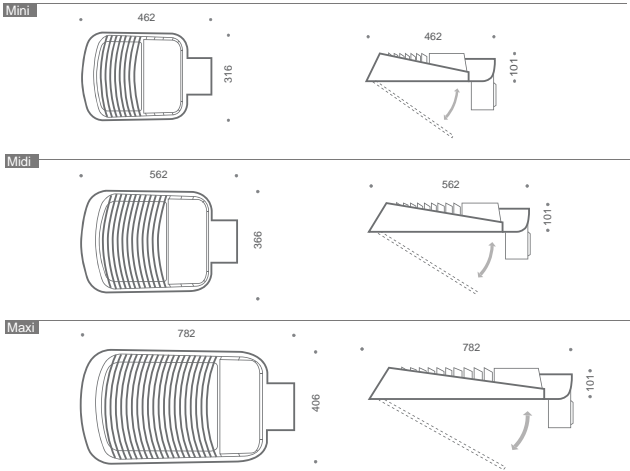
	Consumed Wattage	Number of LEDs	Luminous Flux	CCT*
Mini	30W	12	2700 lm	4000K
	45W	12	4000 lm	4000K
	55W	24	5500 lm	4000K
	60W	12	4900 lm	4000K
	80W	24	7400 lm	4000K
	100W	24	8700 lm	4000K
Midi	75W	48	8000 lm	4000K
	90W	60	9900 lm	4000K
	110W	48	11000 lm	4000K
	135W	60	13600 lm	4000K
	200W	60	18300 lm	4000K
	210W	48	17600 lm	4000K
Maxi	180W	120	19700 lm	4000K
	185W	96	19300 lm	4000K
	240W	120	24400 lm	4000K
	250W	96	24000 lm	4000K
	300W	120	29000 lm	4000K

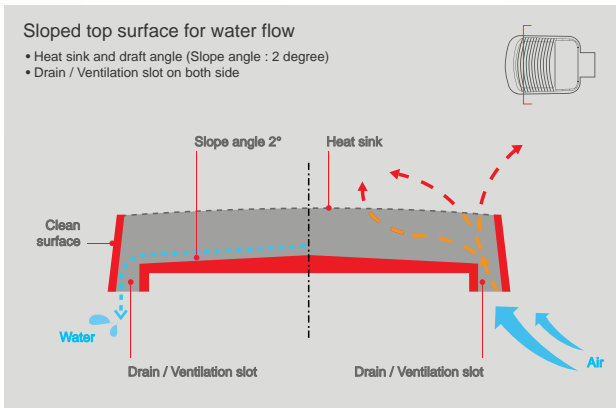
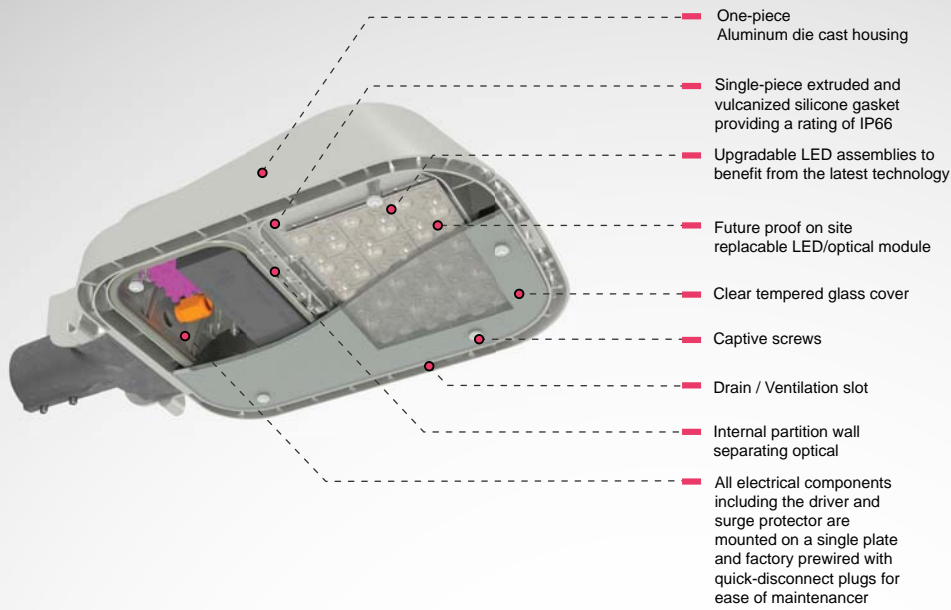
* Lumen multiplier factor
Cool white 5500K: 1.07 Neutral white 4000K: 1.00 Warm white 3000K: 0.93

Applications

Public roadways, city streets, residential streets, parks, walkways and car parks.

Dimensions



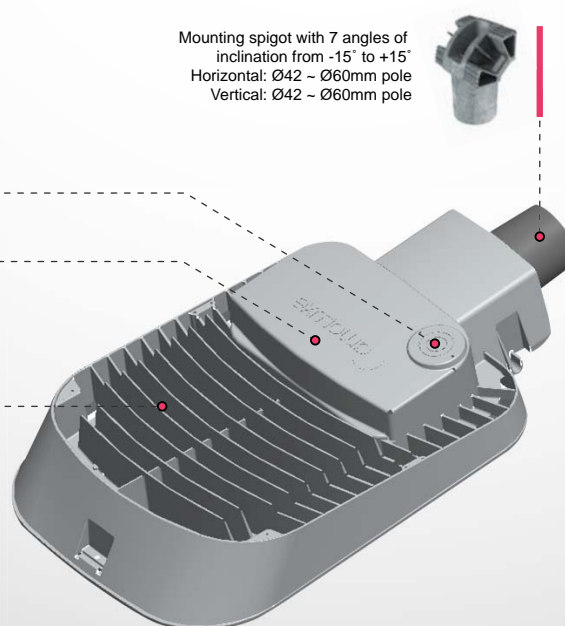


360° rotatable twist-lock photocell receptacle

Electrical compartments

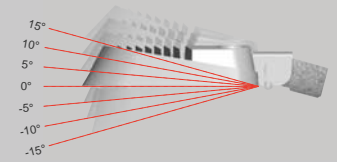
One-piece die-cast aluminum housing with integral cooling ribs

Mounting spigot with 7 angles of inclination from -15° to +15°
Horizontal: Ø42 ~ Ø60mm pole
Vertical: Ø42 ~ Ø60mm pole

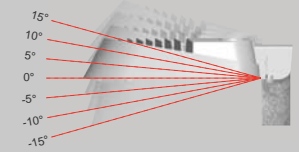


Mounting options

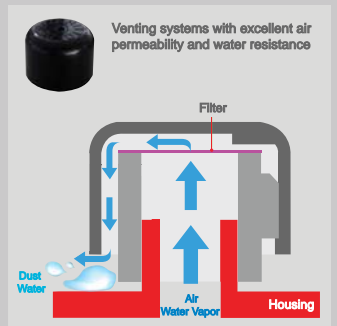
Horizontal mounting



Post top mounting



Venting systems



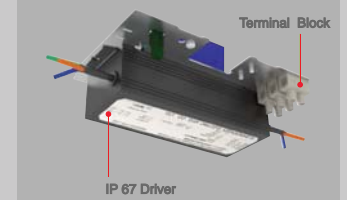
Drain / Ventilation Slot

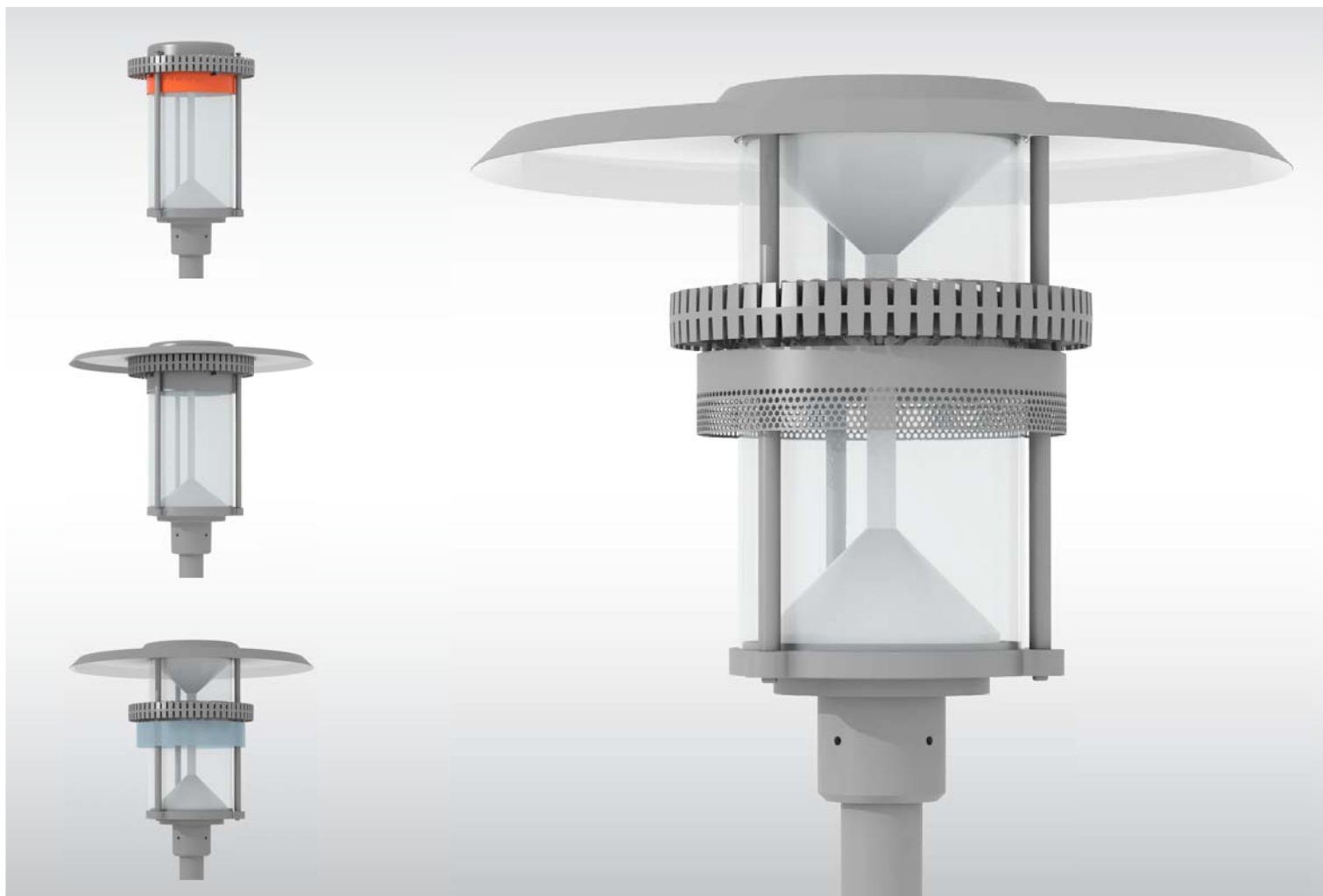


Integral driver tray



All electrical components mounted on a single plate with quick-disconnect plugs for ease of maintenance





Features

Die-cast aluminum vertical cooling ribs effectively transferring heat to outside.

Separate optical and electrical compartments.

Unique methodology and concept allowing superb uniformity.

Wide range of standard and custom photometric distribution patterns available through its patented flexible optical system.

Precise distribution of light with no unwanted light behind the pole or above horizon, making an effective contribution for reduction of light pollution and trespass.

Glare ring significantly reducing unwanted light in high angles for visual comfort.

Separate optical chamber; functional downward light providing symmetric or asymmetric patterns while aesthetical upward light allows for different colors of light.

Weight 7.5kg

Five-year limited warranty. Terms and conditions apply.

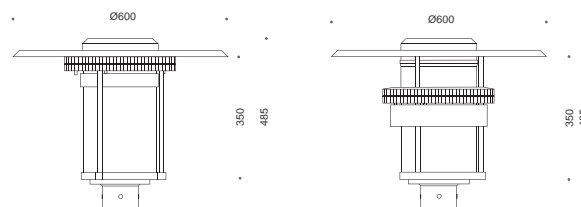
Applications

Urban plazas, entrances, campuses, parks, pathways and car parks.

Ordering Information

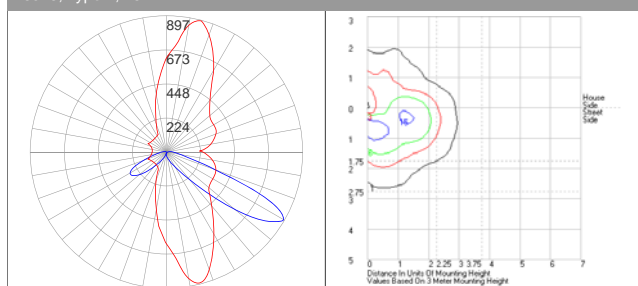
*Neutral white and warm white available

	Consumed Wattage	Number of LEDs	Drive Current	Luminous Flux	CCT*
DK20	15W	12	350mA	1130 lm	5500K
	22W	12	500mA	1500 lm	
	24W	18	350mA	1600 lm	
DK30	35W	18	500mA	2200 lm	5500K
DK40	45W	36	350mA	3300 lm	5500K
DK60	65W	36	500mA	4500 lm	5500K

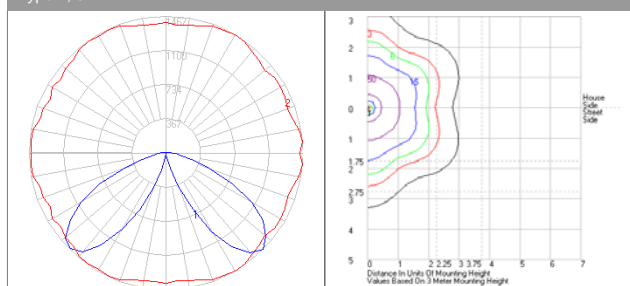


Light distribution

6015, Type II, 15W



Type V, 64W





Features

- One piece die-cast aluminum annulus shaped housing for light and openness.
- Separate optical and electrical compartments.
- One-piece extruded silicone gasket.
- External asymmetric lens eliminating need for additional glass cover for improved efficiency.
- Wide range of standard and custom photometric distribution patterns available through its patented flexible hybrid optical system.
- Various modern and stylish mounting options to meet the needs of different applications.
- Five-year limited warranty. Terms and conditions apply.

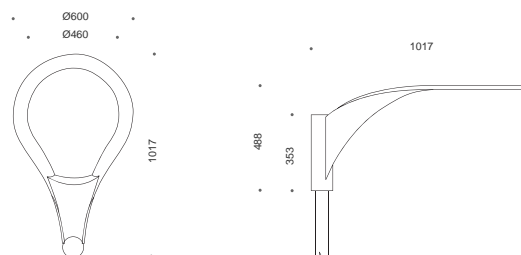
Ordering Information

*Neutral white and warm white available

	Consumed Wattage	Number of LEDs	Drive Current	Luminous Flux	CCT*
NG15	15W	12	350mA	1400 lm	5500K
NG30	30W	24	350mA	2900 lm	5500K
NG60	60W	24	700mA	4900 lm	5500K

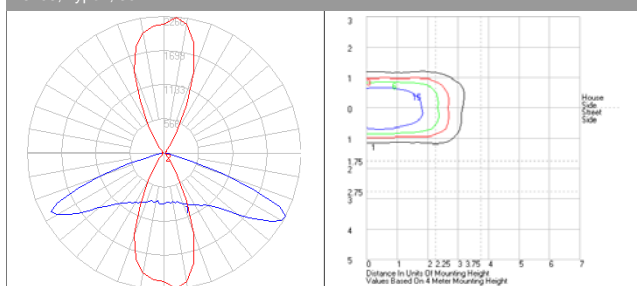
Applications

Urban plazas, entrances, campuses, city streets, residential streets, parks, and pathways.

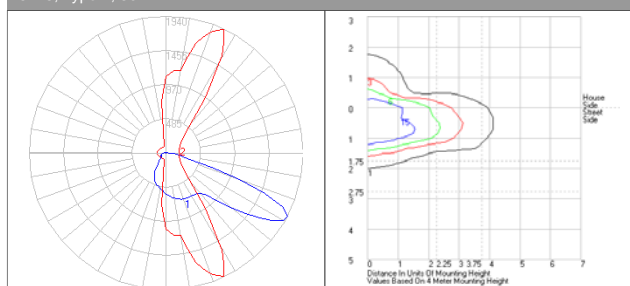


Light distribution

6205, Type I, 30W



6225, Type II, 30W





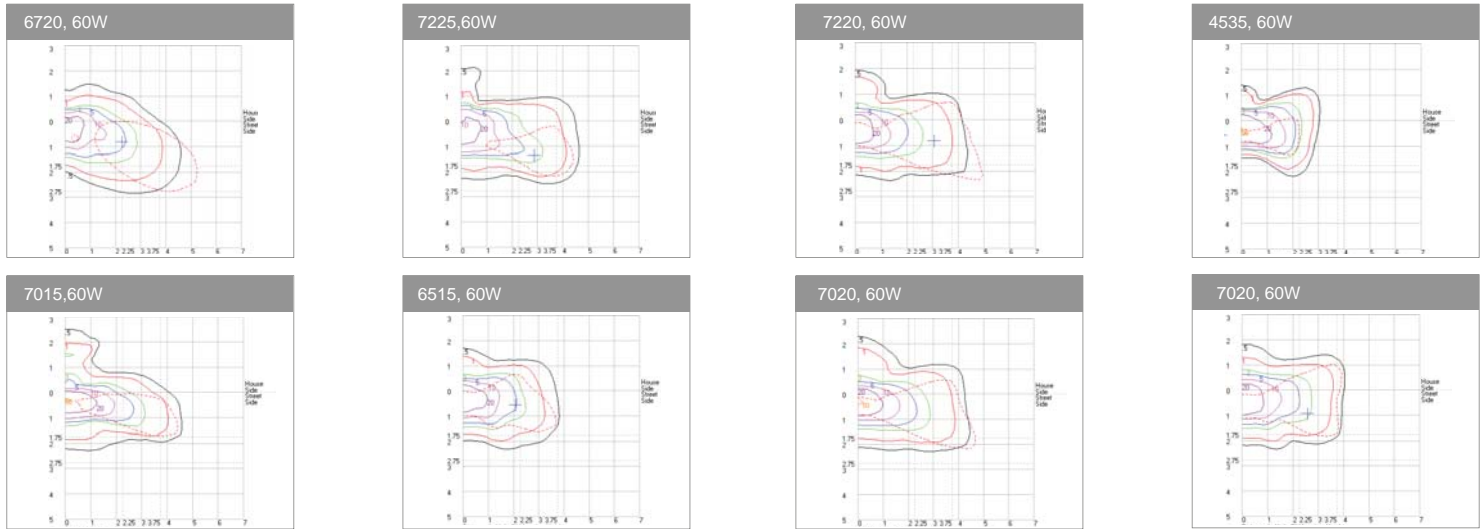
Features

- One piece die-cast aluminum housing with internal cooling ribs.
- No externally exposed heat fins reducing maintenance requirements.
- Aesthetic look and sleek design with low windage area value.
- Modular system design allowing various wattages and operating driving currents.
- Tool-less access to wiring and driver compartment with removable door.
- High-efficiency, integral driver in a separate compartment for improved thermal management.
- Upgradable/Future proof on site replacement optical module.
- Multiple photometric distribution options.
- Additional circuit protection module withstands 10kV of transient line surge.
- Dimming available.
- Weight 8kg
- Five-year limited warranty. Extended warranty available. Terms and conditions apply.

Applications

Public roadways, city streets, residential streets, parks, walkways and car parks.

Light distribution



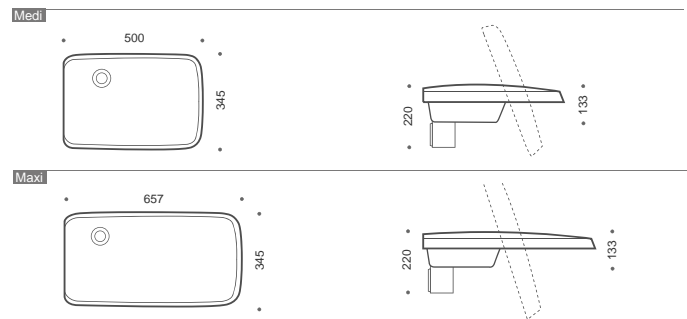
Ordering information

Consumed Wattage	Number of LEDs	Drive Current	Luminous Flux	CCT*
15W	12	350mA	1350 lm	5500K
20W	16	350mA	1800 lm	5500K
30W	24	350mA	2600 lm	5500K
40W	32	350mA	3500 lm	5500K
45W	36	350mA	4000 lm	5500K
57W	32	500mA	4800 lm	5500K
60W	48	350mA	5400 lm	5500K
60W	24	700mA	5800 lm	5500K
80W	32	700mA	6200 lm	5500K
90W	24	1000mA	7800 lm	5500K
120W	32	1000mA	10350 lm	5500K

Consumed Wattage	Number of LEDs	Drive Current	Luminous Flux	CCT*
150W	60	700mA	14500 lm	5500K
180W	72	700mA	17400 lm	5500K
200W	80	700mA	19350 lm	5500K
234W	64	1000mA	20750 lm	5500K
264W	72	1000mA	23350 lm	5500K
282W	112	700mA	27100 lm	5500K
293W	80	1000mA	26000 lm	5500K
302W	120	700mA	29050 lm	5500K
323W	128	700mA	31000 lm	5500K

* Neutral white and warm white available
* Lumen multiplier factor
Cool white 5500K: 1.00 Neutral white 4000K: 0.94 Warm white 3000K: 0.82

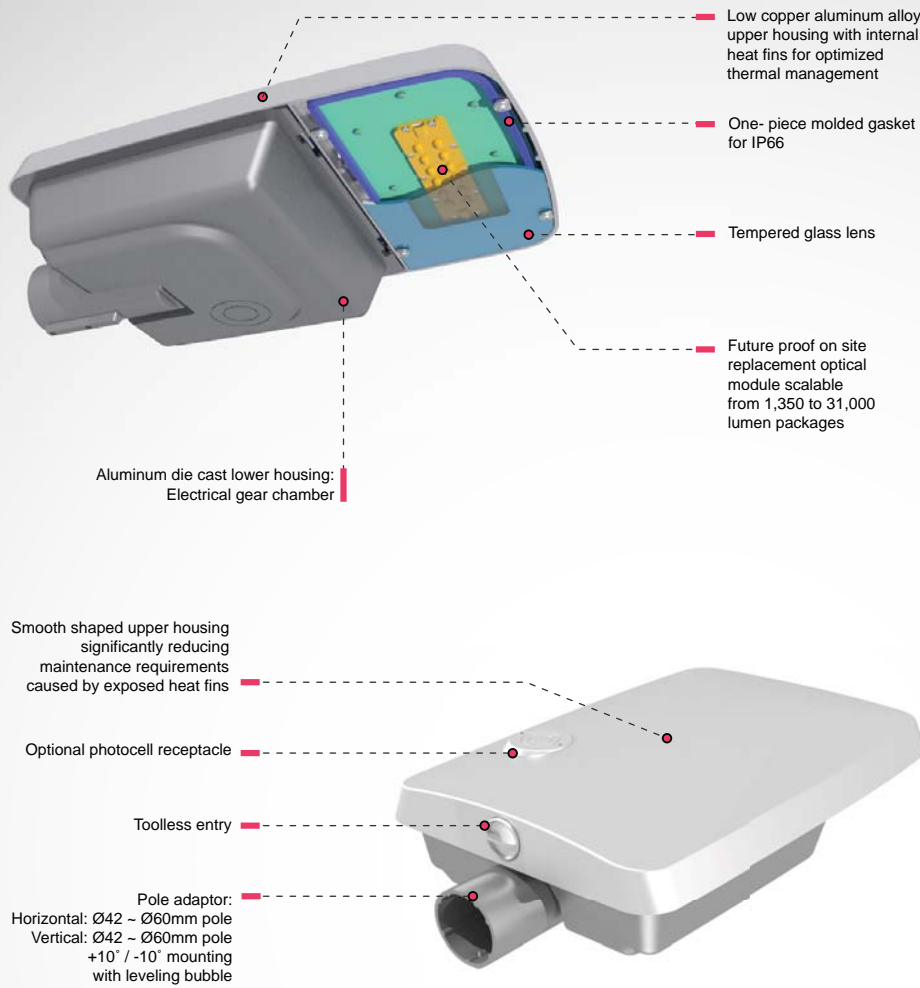
Dimensions



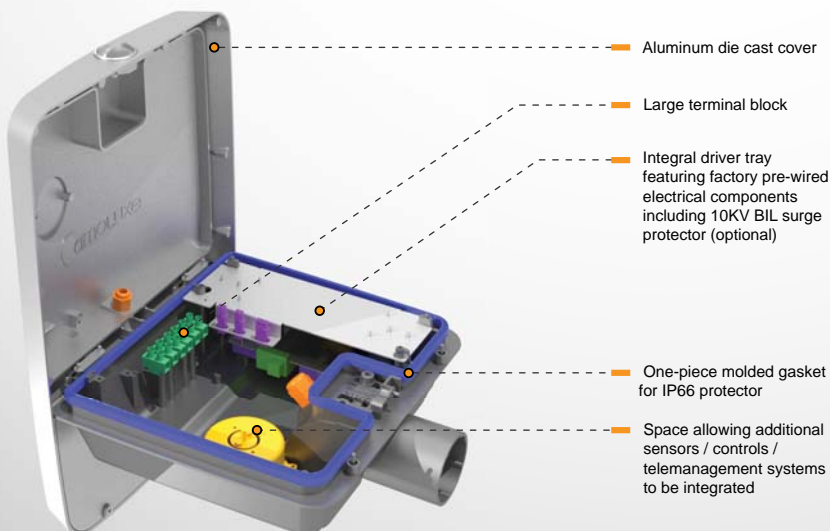
Mounting options



External Design Features



Internal Design Features



Mounting options

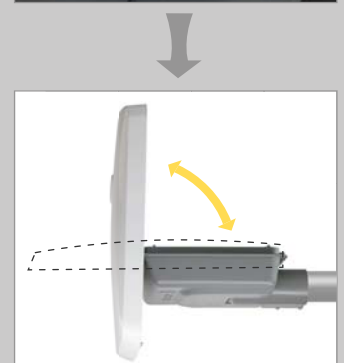
Horizontal mounting



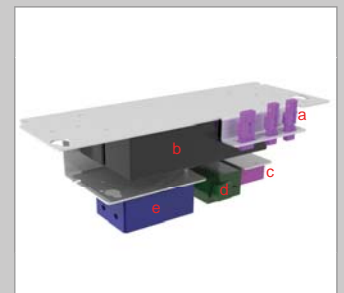
Post top mounting



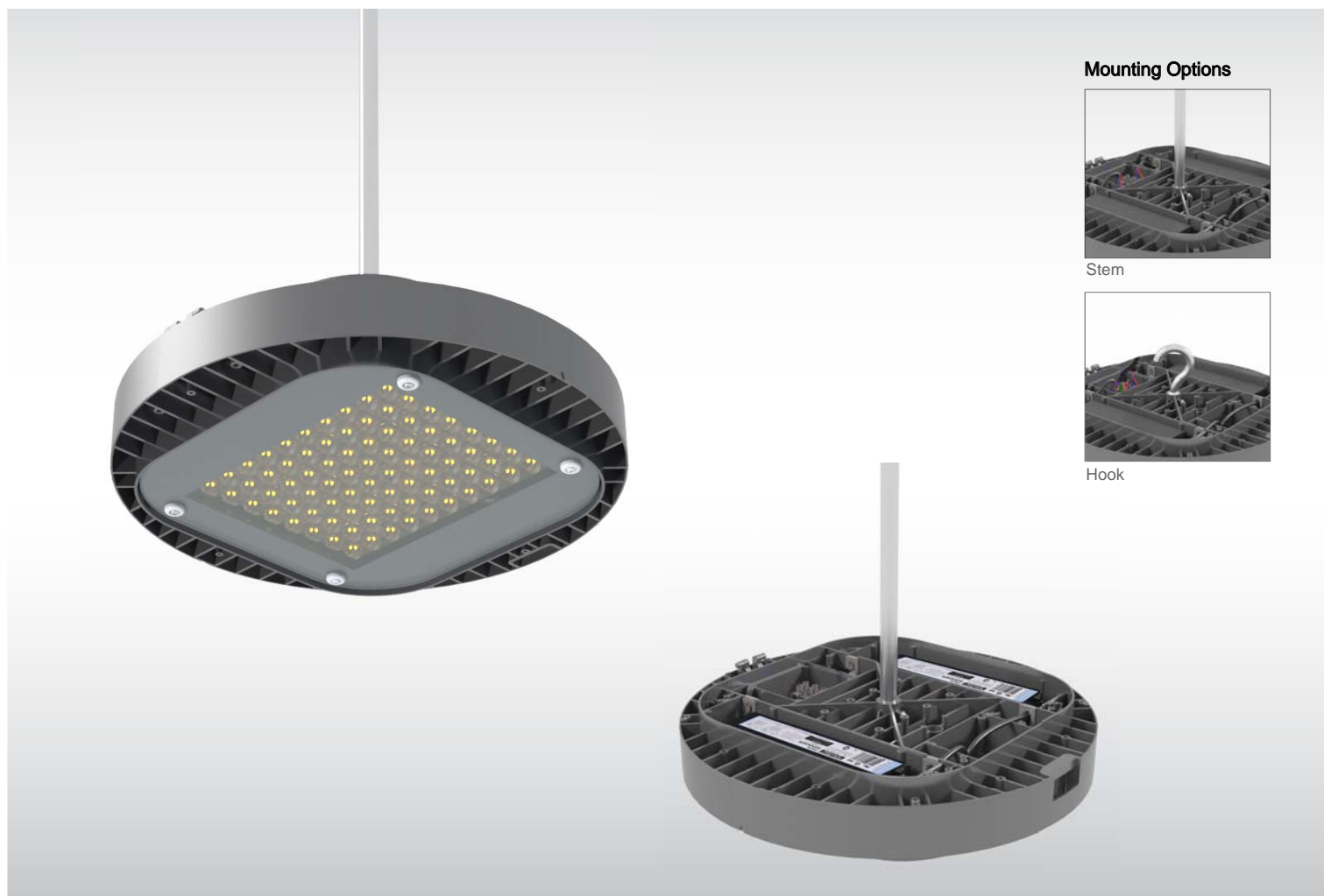
Toolless entry



Integral driver tray



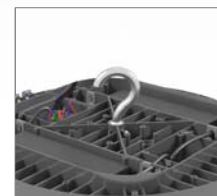
- a. Quick dis connector for LED module
- b. Driver
IP65 for 25W
IP67 for 70W, 150W
- c. Optional DC DC converter
- d. Optional Dyna-dimmer
- e. Optional Surge protector



Mounting Options



Stem



Hook

Features

One piece low copper high pressure die-cast aluminum housing with integral fins.

Stainless steel mounting hardware.

Pendant mount with lock screw provided on fixture. Clear tempered glass.

One-piece extruded silicone gasket providing a continuous seamless seal for glass for IP protection for the optical compartment.

Optional cover for driver compartment available. Additional charge may apply.

No need to remove fixture for relamping. Driver compartment accessible from above for ease of maintenance.

Modular system design allowing various wattages and operating driving currents.

Multiple photometric distribution options. Dimming available. Weight 11kg.

Five-year limited warranty available. Terms and conditions apply.

CE and UL pending.

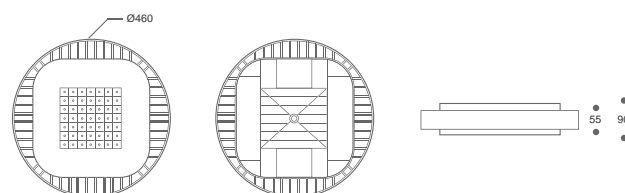
Ordering information

Consumed Wattage	Number of LEDs	Drive Current	Luminous Flux	CCT*	Dimensions
150W	60	700mA	14500 lm	5500K	Ø460 x 90(h)
200W	80	700mA	19300 lm	5500K	Ø460 x 90(h)
215W	60	1000mA	19400 lm	5500K	Ø460 x 90(h)
285W	80	1000mA	25900 lm	5500K	Ø460 x 90(h)
321W	60	1500mA	25000 lm	5500K	Ø460 x 90(h)

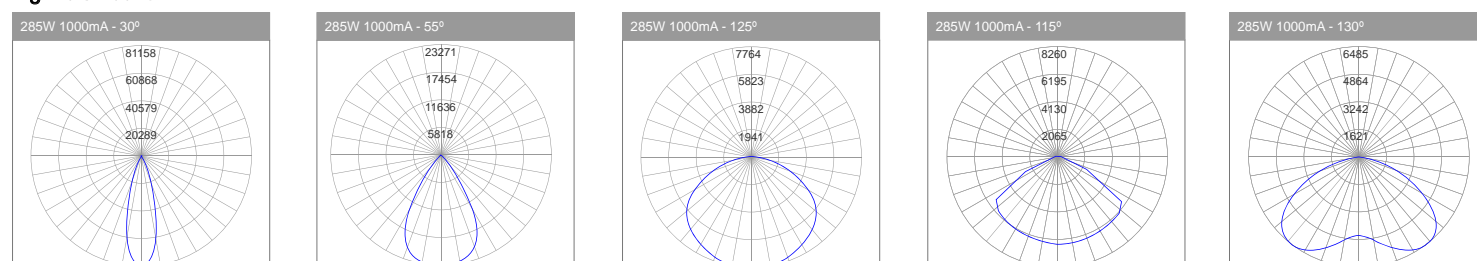
Applications

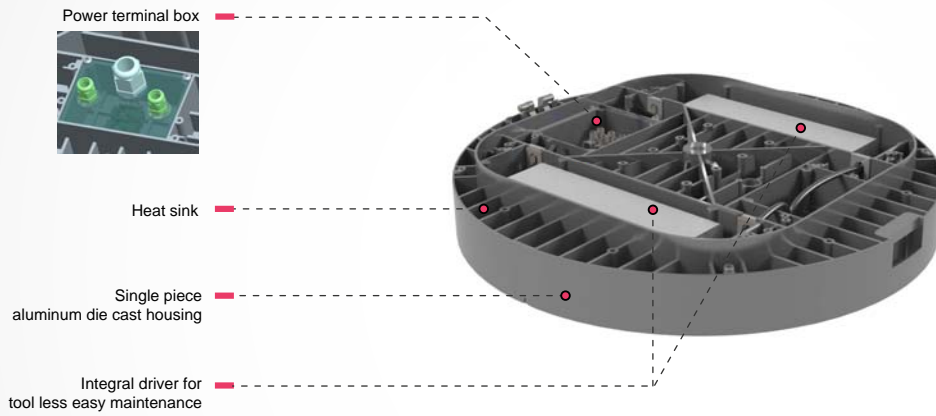
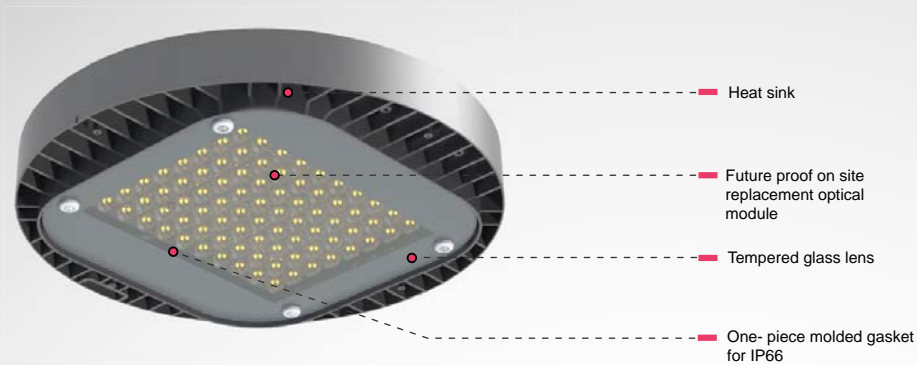
Harsh environments with humidity or moisture is present.

Food and beverage plants, exterior areas, wastewater treatment, schools, parking garages, tunnels, freezers and storage, animal containment and inspection and quality control.

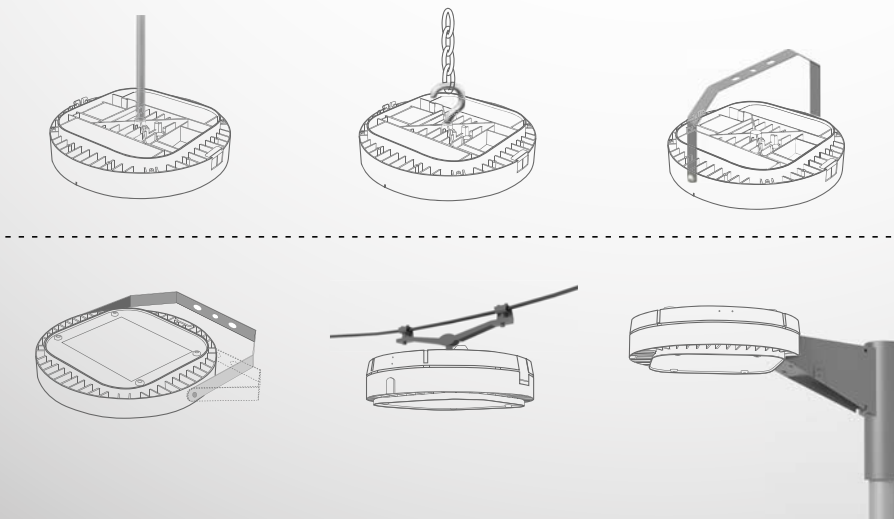


Light distribution

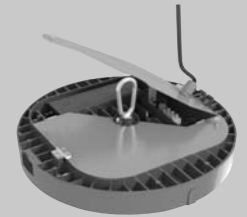




Mounting Options



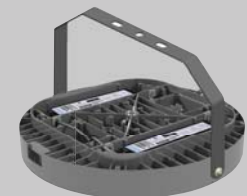
Applications



Optional cover



Single driver mounting



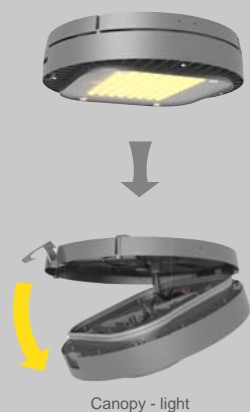
Floodlight bracket



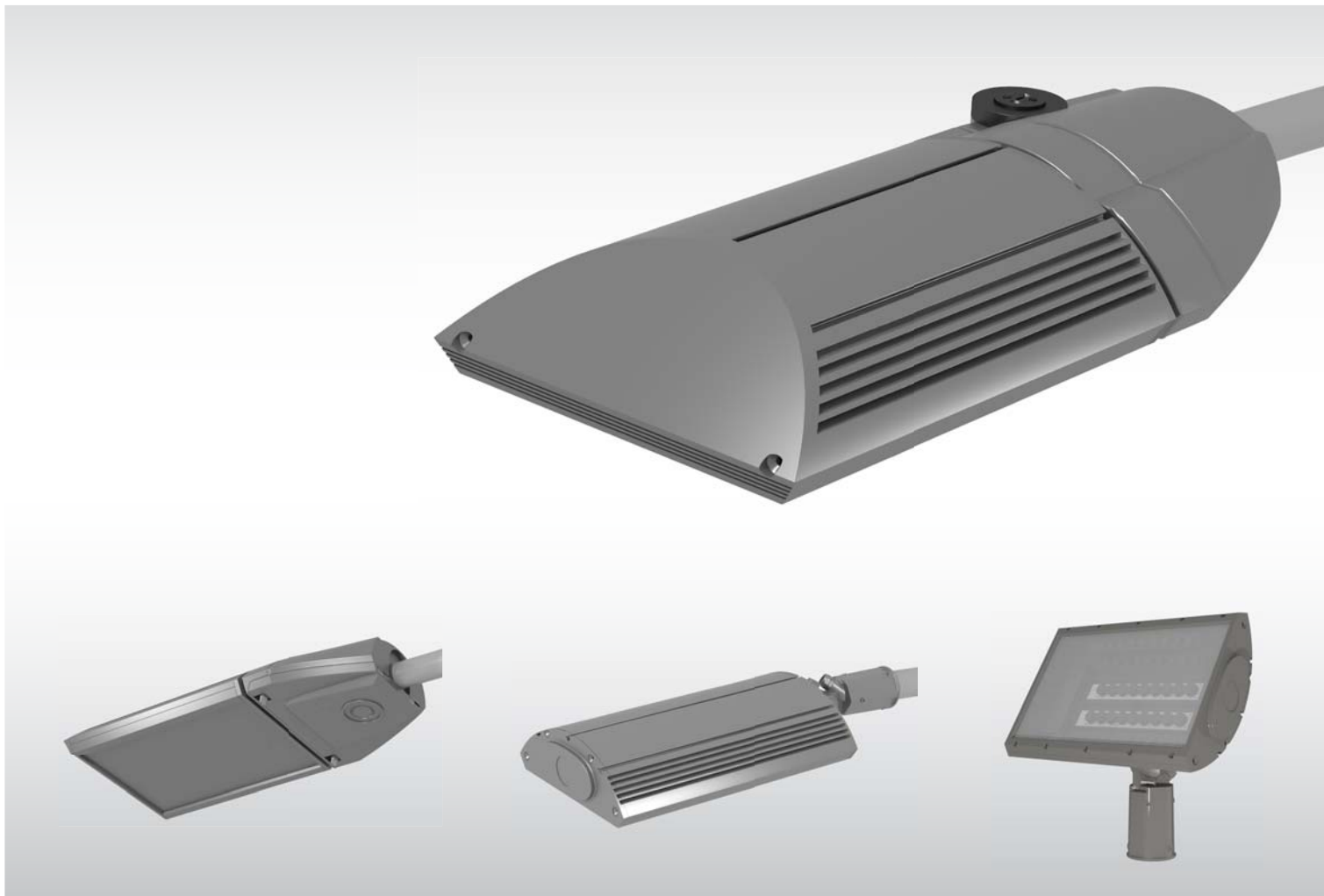
Glare shield



Street light option



Canopy - light



Features

One piece die-cast aluminum housing with horizontal cooling ribs.

Separate optical and electrical compartments.

Unique methodology and concept allowing superb uniformity.

Wide range of standard and custom photometric distribution patterns available through its patented flexible optical system.

Precise distribution of light with no unwanted light behind the pole or above horizon, making an effective contribution for reduction of light trespass.

Five-year limited warranty. Terms and conditions apply.

Applications

Public roadways, city streets, residential streets, parks, and walkways.

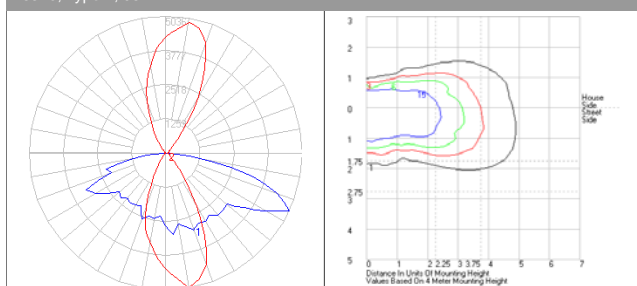
Ordering Information

*Neutral white and warm white available

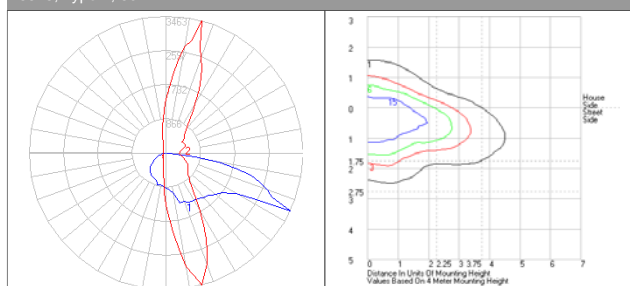
	Consumed Wattage	Number of LEDs	Drive Current	Luminous Flux	CCT*
VS30	22W	24	250mA	1900 lm	5500K
	30W	24	350mA	2600 lm	
VS60	55W	30	500mA	4500 lm	5500K
	60W	48	350mA	5300 lm	
VS70	63W	24	700mA	4700 lm	5500K
	64W	36	500mA	5500 lm	
	67W	54	350mA	6200 lm	
VS100	95W	36	700mA	7100 lm	5500K
	96W	54	500mA	8000 lm	
	100W	84	350mA	8200 lm	
VS140	135W	48	700mA	9500 lm	5500K
	140W	78	500mA	11000 lm	
	140W	114	350mA	12000 lm	
VS150	145W	54	700mA	10700 lm	5500K
	150W	84	500mA	12000 lm	
	150W	126	350mA	13000 lm	

Light distribution

6510, Type II, 95W



6515, Type II, 60W





Features

One piece die-cast aluminum housing with integral cooling ribs and door.
High-efficiency, integral driver in a separate compartment for improved thermal management.
Choice of 6 LED high performance optical distributions.
Continuous one-piece silicone gasket.
Suitable for operation in -30°C to 40°C ambient environments.
Two-year limited warranty, extended five-year warranty available. Terms and conditions apply.

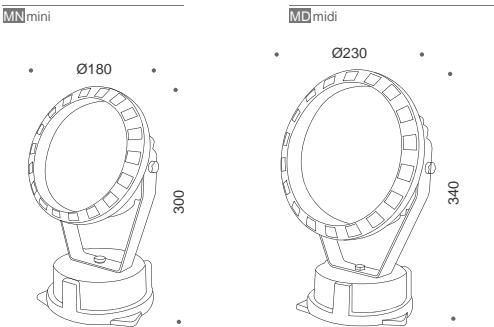
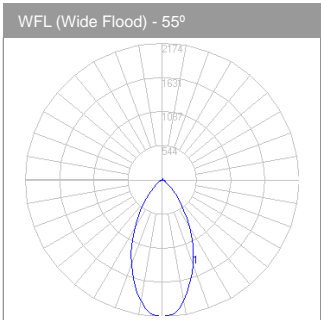
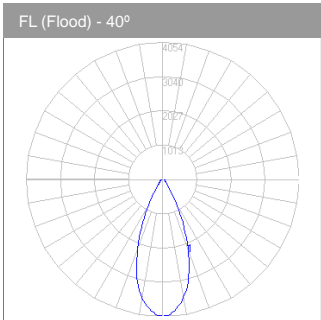
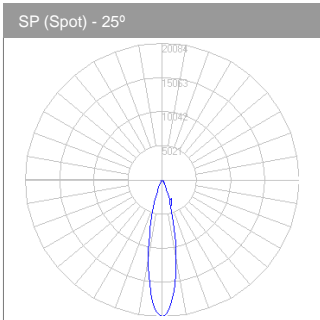
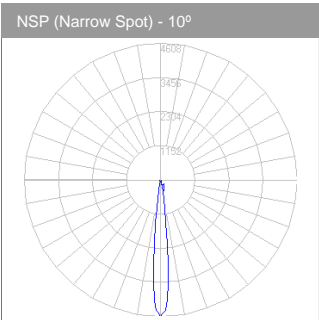
Ordering information

	Consumed Wattage	Number of LEDs	Drive Current	Luminous Flux	Dimensions
mini	22W	18	350mA	1,800 lm	Ø180 x 300(h)
	30W	24	350mA	2,400 lm	
midi	66W	36	500mA	5,602 lm	Ø230 x 340(h)

Applications

Landscape and façade lighting.

Light distribution





Features

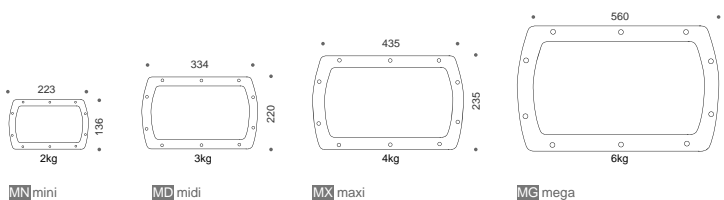
One piece die-cast aluminum housing with integral cooling ribs and door.
High-efficiency, integral driver (IP67) separated for improved thermal management.
Choice of 4 LED high performance optical distributions.
Continuous one-piece silicone gasket.
Suitable for operation in -30°C to 40°C ambient environments.
Two-year limited warranty, extended five-year warranty available. Terms and conditions apply.

Ordering information

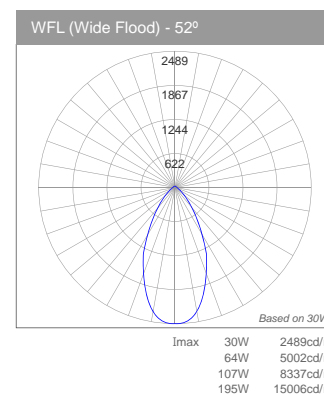
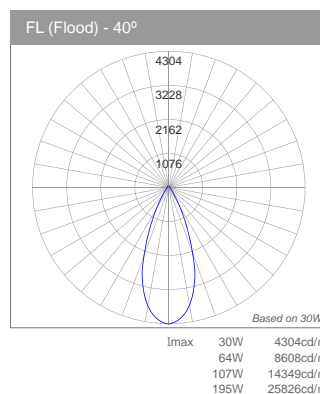
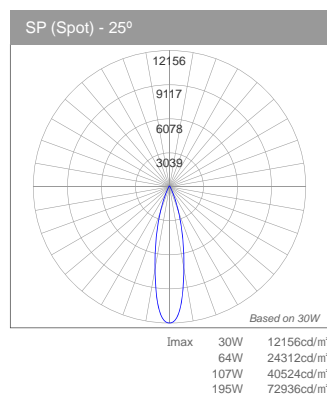
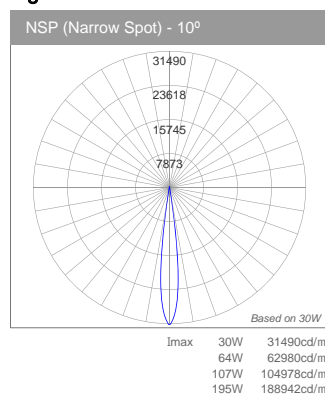
	Consumed Wattage	Number of LEDs	Drive Current	Luminous Flux	Dimensions
mini	30W	24	350mA	2,260 lm	223 x 136 x 143(h)
midi	64W	36	500mA	4,650 lm	334 x 220 x 170(h)
maxi	107W	60	500mA	7,740 lm	435 x 235 x 200(h)
mega	195W	108	500mA	13,940 lm	560 x 330 x 230(h)

Applications

Landscape and façade lighting.



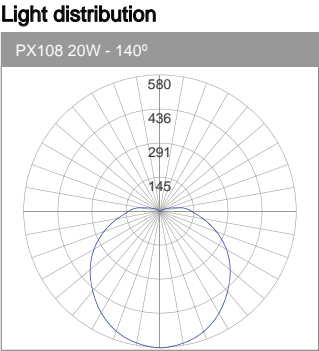
Light distribution





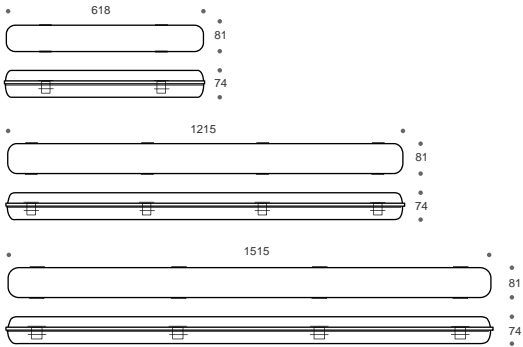
- Features
- Contoured fiberglass housing with humidity or moisture protection.
 - Polyurethane gasket providing a continuous seamless seal for the diffuser.
 - Tool less four polycarbonate sturdy cam latches clamp diffuser tightly for a positive seal between housing, gasket, and diffuser.
 - Standard 13mm conduit entries in both ends.
 - Injection molded lenses provide soft, uniform light.
 - High efficiency integral driver.
 - Suitable for operation in -30°C to 50°C ambient environments.
 - Two-year limited warranty, extended five-year warranty available. Terms and conditions apply.

- Applications
- Harsh environments with humidity or moisture is present.
 - Food and beverage plants, exterior areas, wastewater treatment, schools, parking garages, tunnels, freezers and storage, animal containment and inspection and quality control.



Ordering information

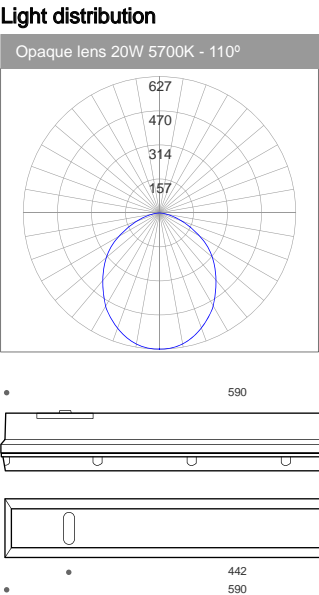
	Consumed Wattage	Number of LEDs	Luminous Flux	Max Candela	CCT*	Dimensions
PX10-01	14W	60	1223 lm	343 cd.	2700K	81 x 74 x 618(L)
PX10-02	20W	120	1757 lm	493 cd.	2700K	81 x 74 x 1215(L)
PX10-03	35W	150	3058 lm	493 cd.	2700K	81 x 74 x 1515(L)
PX10-04	14W	60	1381 lm	381 cd.	3000K	81 x 74 x 618(L)
PX10-05	20W	120	1984 lm	547 cd.	3000K	81 x 74 x 1215(L)
PX10-06	35W	150	3453 lm	547 cd.	3000K	81 x 74 x 1515(L)
PX10-07	14W	60	1439 lm	397 cd.	4000K	81 x 74 x 618(L)
PX10-08	20W	120	2067 lm	570 cd.	4000K	81 x 74 x 1215(L)
PX10-09	35W	150	3598 lm	570 cd.	4000K	81 x 74 x 1515(L)
PX10-10	14W	60	1468 lm	404 cd.	5700K	81 x 74 x 618(L)
PX10-11	20W	120	2109 lm	580 cd.	5700K	81 x 74 x 1215(L)
PX10-12	35W	150	3670 lm	580 cd.	5700K	81 x 74 x 1515(L)





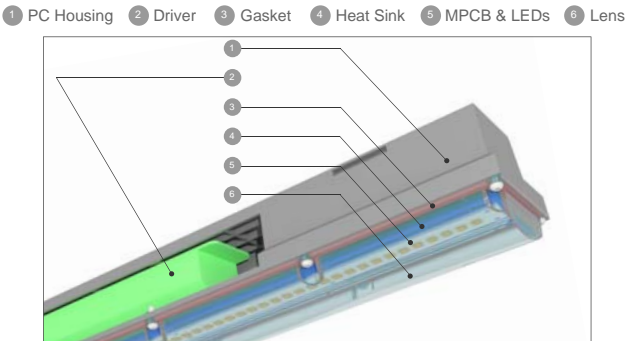
- Features
- Contoured fiberglass housing with humidity or moisture protection.
 - Polyurethane gasket providing a continuous seamless seal for the diffuser.
 - Captive screws secure diffuser tightly for a positive seal between housing, gasket, and diffuser.
 - Standard 13mm conduit entries in both ends.
 - Injection molded lenses provide soft, uniform light.
 - High efficiency integral driver.
 - Suitable for operation in -30°C to 50°C ambient environments.
 - Three-year limited warranty, extended five-year warranty available. Terms and conditions apply.

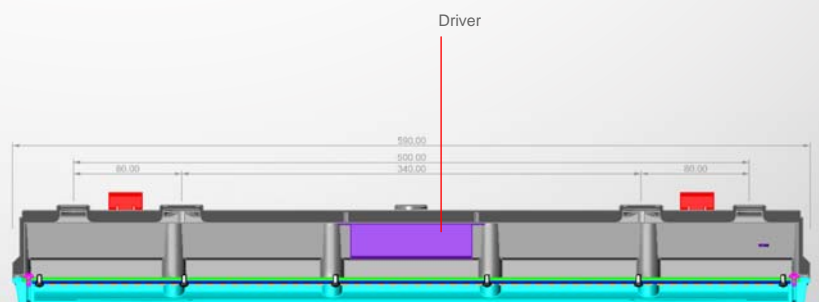
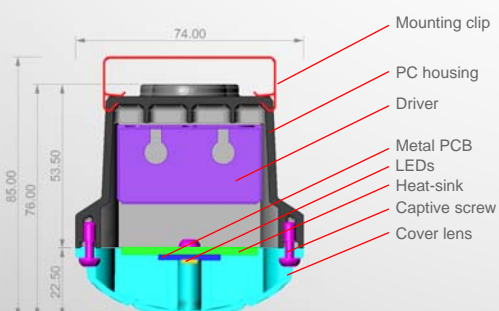
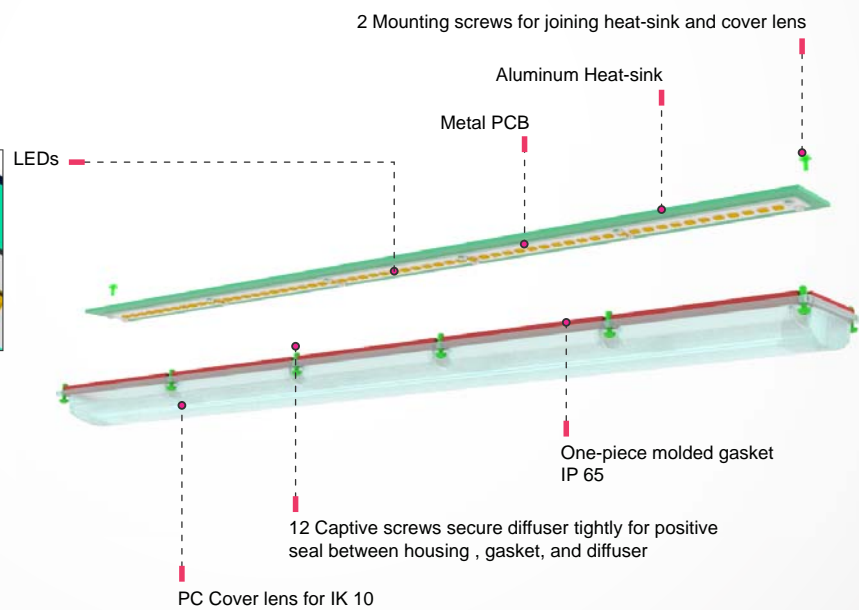
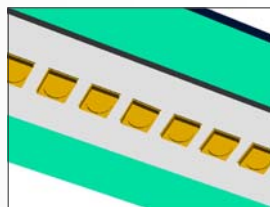
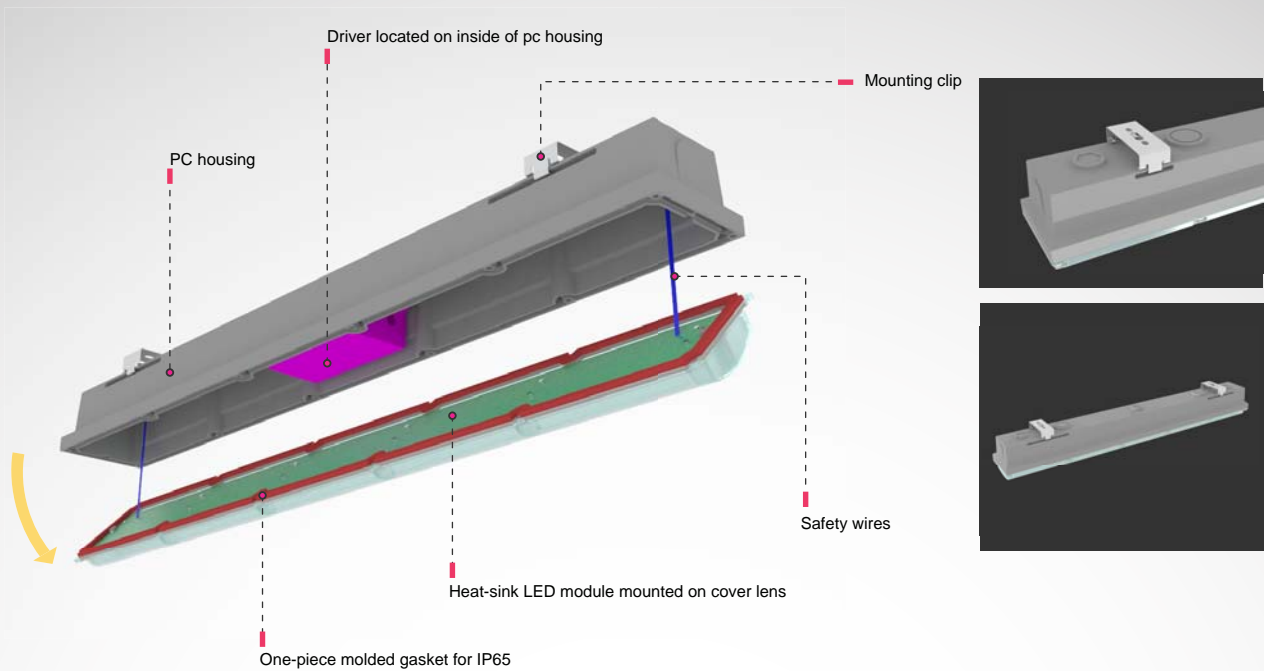
- Applications
- Harsh environments with humidity or moisture is present.
 - Food and beverage plants, exterior areas, wastewater treatment, schools, parking garages, tunnels, freezers and storage, animal containment and inspection and quality control.



Ordering information

	Consumed Wattage	Number of LEDs	Luminous Flux	Max Candela	CCT*	Dimensions
Opaque	14W	60	1057 lm	363 cd.	2700K	75 x 74 x 590(L)
	20W	120	1519 lm	522 cd.	2700K	75 x 74 x 590(L)
Opaque	14W	60	1171 lm	412 cd.	3000K	75 x 74 x 590(L)
	20W	120	1683 lm	592 cd.	3000K	75 x 74 x 590(L)
Opaque	14W	60	1244 lm	428 cd.	4000K	75 x 74 x 590(L)
	20W	120	1787 lm	615 cd.	4000K	75 x 74 x 590(L)
Opaque	14W	60	1268 lm	436 cd.	5700K	75 x 74 x 590(L)
	20W	120	1823 lm	627 cd.	5700K	75 x 74 x 590(L)





TX 03

LED downlight

Features

Mitre-formed housing from a single piece of aluminum extrusion with integral structural ribs for structural integrity and aluminum cover sheet that is crowned and crimped directly into a specially designed upper channel of the vertical extrusion.

mitre-cut door from a single piece of aluminum extrusion and mechanically fastened with no welds or screws.

Self-retained opaque lens prevents intrusion from moisture, dust, and other contaminants.

Anodized finish.

LED light source shielded from direct view.

Fixture height of 50mm allows installation in shallow plenum applications.

High-efficiency, integral driver in a separate compartment for improved thermal management.

70% lumen output at more than 50,000 hours.

Suitable for operation in -30°C to 50°C ambient environments.

Two-year limited warranty, extended five-year warranty available. Terms and conditions apply.

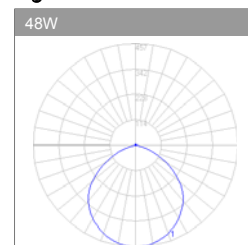
Applications

Corridors, offices, reception areas, schools, hotels and retail environments.

Ordering information

	Consumed Wattage	Number of LEDs	Ø Aperture	Luminous Flux	Dimensions
TX0202	48W	240	2" x 2"	3700 lm	600x600x50(h)
TX0104	48W	240	1" x 4"	3700 lm	300x1200x50(h)

Light distribution



TX 05

LED lensed troffer

Features

0.8mm cold rolled stainless steel sheet with ABS diffuser and 64 pcs of 0.5W high power LED array.

The product design is the overthrow of tradition.

This LED panel turns out to be the revolutionary product which substituted the traditional T5 lamp panel.

Under serious light distribution design, 64 pcs LED light source of 0.5W lay on the lamp panel, which guarantees maximum light output and controls the glare in the meantime.

Color temperature 4500k, 6500k

IP 44, white color

CRI 75.

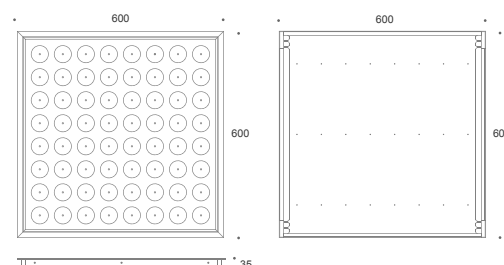
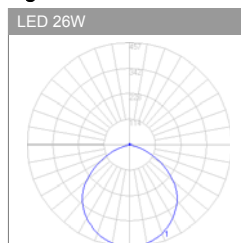
Applications

Office

Ordering information

Consumed Wattage	Number of LEDs	Drive Current	Luminous Flux	Dimensions
26W	64	350mA	2270 lm	600x600x35

Light distribution





- Features
- 28W, 40W LED Tube.

Integral driver.

T8 Size with 1200mm, 1500mm.

100degree beam angle.

G13 Base.

Optional integral daylight sensor available.

Frosted and clear type cover.

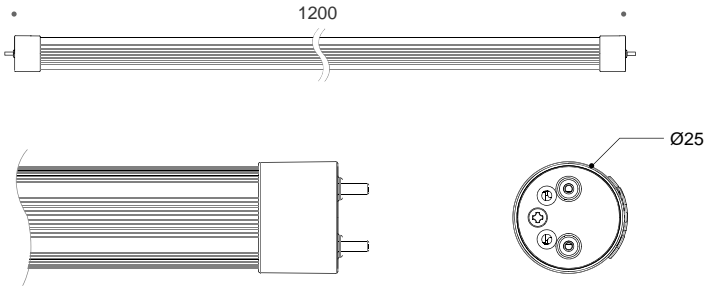
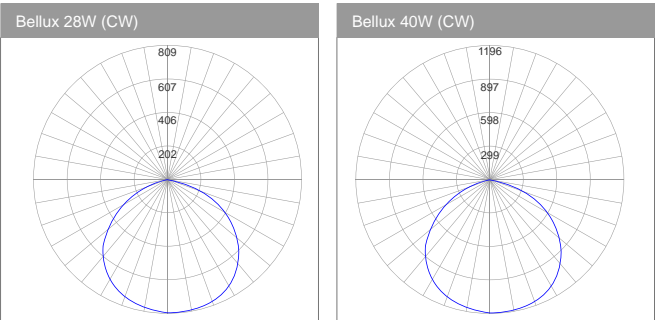
Ordering information

Consumed Wattage	Number of LEDs	Luminous Flux	Max Candela	CCT	Dimensions
28W	28	1912 lm	663 cd	3500 K	Ø25 x 1200
28W	28	2331 lm	809 cd	5500 K	Ø25 x 1200
40W	40	2827 lm	981 cd	3500 K	Ø25 x 1500
40W	40	3447 lm	1196 cd	5500 K	Ø25 x 1500

*Multiplier factor for neutral white: 0.94
for warm white: 0.82

- Applications
- Office, Factory.

Light distribution





17-2 Jamwondong, Seochogu
Seoul, Korea 137 - 902
t) +82 2 516 1095

info@amoluxe.eu
www.amoluxe.eu

Revision 15Q1